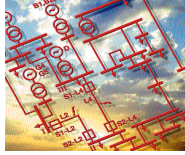


Energy Division



Connecting the World of Power



CEE/CIS 03/02 - EN

1 of 17

Purpose Statement

To help our customers to improve the reliability and economy of their electrical networks

CEE/CIS 03/02 - EN

2 of 17

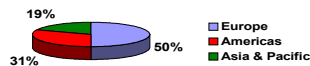
Global Presence

Headquarter in Germany Ottobrunn / Munich

Over 3000 people work in research and development, manufacturing, marketing, sales and administration in over 80 countries to support customers.



Sales over \$ 500 million

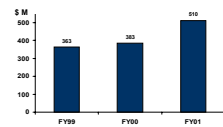


CEE/CIS 03/02 - EN

3 of 17

History

Originated from the AMP, RAYCHEM and SIMEL electrical product divisions, the Energy Division continuously expands through new product development and integration of a growing number of companies



Expertise of over 40 years in materials science, product design and process engineering goes into the invention, development, manufacture and marketing of high-performance products.



CEE/CIS 03/02 - EN

4 of 17

Research and Development

Together with customers, we pioneer the development of new products with coordinated worldwide research. We also initiate research activities with universities.



Engineering Centers:
Australia, Brazil, Canada, China, France, Germany, Thailand, United Kingdom, United States

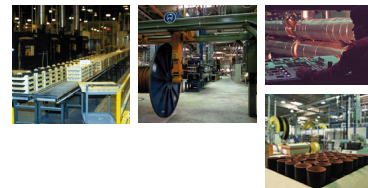


CEE/CIS 03/02 - EN

5 of 17

Manufacturing

- Australia
- Brazil
- Canada
- China
- France
- Germany
- India
- Ireland
- Switzerland
- Thailand
- United Kingdom
- United States

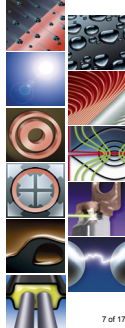


CEE/CIS 03/02 - EN

6 of 17

Enhanced properties of materials and products

- Excellent resistance to surface electrical activity
- Excellent resistance to thermal ageing and UV light
- Void-free interfacial bonding and insulation thickness memory
- Moisture blocking and impermeability to cable oils
- Electrical stress control
- Reduced contact resistance
- Excellent bimetallic interface
- Network and circuit protection
- Reliable, durable current interruption
- Sealing and filling of complex geometries with cross linking materials

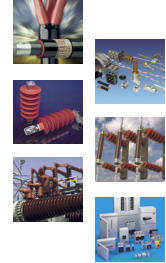


CEE/CIS 03/02 - EN

7 of 17

Product lines

- Cable Accessories
- Connectors and Fittings
- Metaloxide Surge Arresters
- Polymeric Insulators
- Insulation Enhancement System
- Electrical Equipment Components

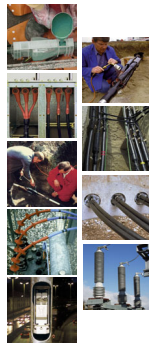


CEE/CIS 03/02 - EN

8 of 17

Cable Accessories

- Low, medium and high voltage joints & terminations
- Connection systems for compact switchgear (eg. SF6-insulated)
- Sealing systems
- Tubings, repair sleeves and components
- Fuse boxes for street lighting and traffic control



CEE/CIS 03/02 - EN

9 of 17

Connectors & Fittings

- Bolted connectors and clamps
- Insulation piercing connectors
- Compression connectors and lugs
- Bimetallic connectors and lugs
- Mechanical connectors and lugs
- Wedge pressure technology connectors
- Heliformed, cast and compression fittings
- Transmission line spacers and dampers



CEE/CIS 03/02 - EN

10 of 17

Surge Arresters

- Medium- and high-voltage arresters and surge counters for outdoor applications
- Compact medium-voltage arresters for indoor use
- Protection systems for medium-voltage covered conductors and high-voltage cable sheaths
- Rugged arresters for railway applications
- Low-voltage gapless surge arresters with weatherproof housing

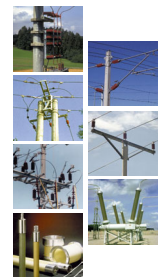


CEE/CIS 03/02 - EN

11 of 17

Insulators

- Polymeric tension insulators
- Polymeric line station post insulators
- Polymeric railway insulators
- Insulators for heavily polluted areas
- Composite and heat-shrinkable shedded components
- Customer designed composite hollow insulators and operating rods for high voltage equipment



CEE/CIS 03/02 - EN

12 of 17

Insulation Enhancement System

- Substation protection systems
- Overhead line protection
- Pollution and heavy wetting flashover protection
- Bus insulation for low and medium voltage applications



CEE/CIS 03/02 - EN

13 of 17

Electrical Equipment

- Low-voltage circuit breakers (MCB, MCCB), fused switches, modular devices and accessories
- Surge protection for power supply and data systems
- Distribution panel and switch boards
- Photocontrols for area lighting
- Busbar distribution systems incl. insulated flexible busbars, lugs and pre-insulated connectors
- Fuse boxes and underground pillar boxes
- Identification systems for cables and wires
- Measurement, protection and generator set control systems
- Digital metering and protection systems for commercial, industrial and domestic applications



CEE/CIS 03/02 - EN

14 of 17

Focus on Customers

An effective product supply chain ensures that our products flow in time from origin to installation:

- Single point of customer contact
- Order handling and follow-up
- Multilingual contract negotiations
- Emergency product supply
- Tailor-made arrangements for individual requirements
- Departures, transit times and arrival are defined and communicated to the customer regularly
- Assistance in handling tariff codes, customs clearance, duty, taxes, certificates and declarations



CEE/CIS 03/02 - EN

15 of 17

Focus on Customers

In accordance with our purpose statement we offer more than just technical support:

- Cooperation with customers in product development
- Tailor-made products
- Application support
- Technical literature in local language, such as catalogues, application guides and installation instructions

CEE/CIS 03/02 - EN

16 of 17

Our Reference

The most innovative utilities and industrial companies around the world use our electrical power products

CEE/CIS 03/02 - EN

17 of 17